

**Input Volt.****5, 12, 15, 24 VDC****Output Volt.****(+/-) 3.3, 5, 9, 12, 15, 18 VDC**

Other specifications required, please inquire us for details.

**Technical Parameters**

All the parameters below are tested at TA=25° C, nominal input voltage, rated output current.

Input Parameters

Volt. Range	+/- 10 %
Filter	Ceramic-capacitor

Isolation Parameters

Rated Isolation Volt.	1000 VDC
Leak current	<1 m A
Resistance	10 ⁹ Ohm
Capacitor	60 pF TYP.

Output Parameters

Volt. Precision	+/- 5 %, max.
(20 MHz BW) Ripple&Noise	150mV p-p, max.
Continuous short-circuit time	Immediately (<1s)
Linear volt. Calibration	+/- 1,2 % / 1,0 % of Vin
Load volt. Calibration	+/- 8 %, load = 20 ~ 100 %
Temperature index	+/- 0,02 % / °C

General Parameters

Efficiency	70% to 85 %
Switching Frequency	60~125 KHz, type.

Environmental Parameters

Operating Temp. (environmental)	- 40° C to + 85° C
Storage Temp.	- 55 °C to + 125 °C
Reducing rated value	See temperature derating graph below
Humidity	≤ 90 %, Non-compression
Colling method	Natural Free-air

Dimension

DIP Package size	19.6 x7.0 x10.0 mm
	0.77 x 0.28 x 0.39 inch
	2.0 g~3.0 g

Weight**External Package Material**

Non-conductive flame-retardant black plastics

Typical Product List: (The parameters below are collected at 8 hours full-load aging test.)

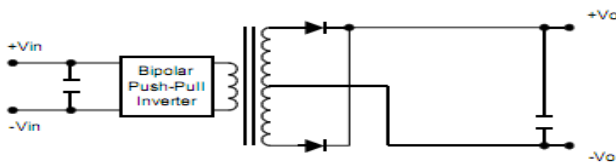
Model No.	Input Volt. Vin(VDC)	Input Current Empty load (mA)	Input Current Full load (mA)	Output Volt. Vout(VDC)	Output Current (max.mA)	Efficiency Full load (%TYPE)
A0505D-1W	5	28	282	+/-5	+/-100	71
A0509D-1W	5	23	256	+/-9	+/-55	78
A0515D-1W	5	20	250	+/-15	+/-34	78
A1205D-1W	12	16	113	+/-5	+/-100	74
A1212D-1W	12	12	105	+/-12	+/-42	79
A2403D-1W	24	11	56	+/-3.3	+/-150	75
A2405D-1W	24	9	54	+/-5	+/-100	77
A2412D-1W	24	8	53	+/-12	+/-42	79



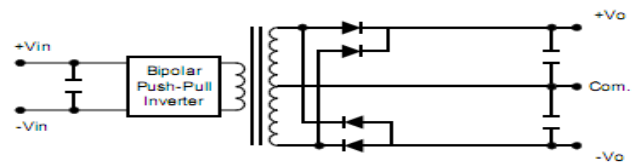
Model No.	Input Volt. Vin(VDC)	Input Current Empty load (mA)	Input Current Full load (mA)	Output Volt. Vout(VDC)	Output Current (max.mA)	Efficiency Full load (%TYPE)
A0505D-2W	5	40	555	+/-5	+/- 200	72
A1205D-2W	12	22	225	+/-5	+/- 200	74
A1212D-2W	12	20	211	+/-12	+/- 84	79
A1215D-2W	12	20	208	+/-15	+/- 67	80
A2405D-2W	24	11	111	+/-5	+/-200	75
A2412D-2W	24	9	105	+/-12	+/- 84	79
A2415D-2W	24	8	103	+/-15	+/-67	79

Functional Block Diagram:

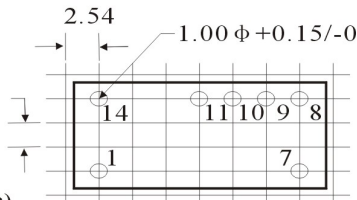
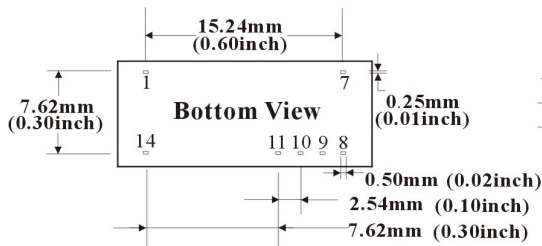
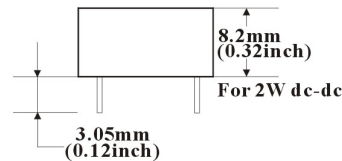
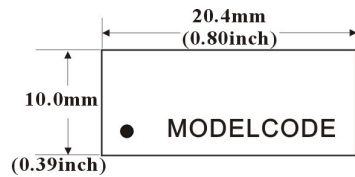
Single Output



Dual Output

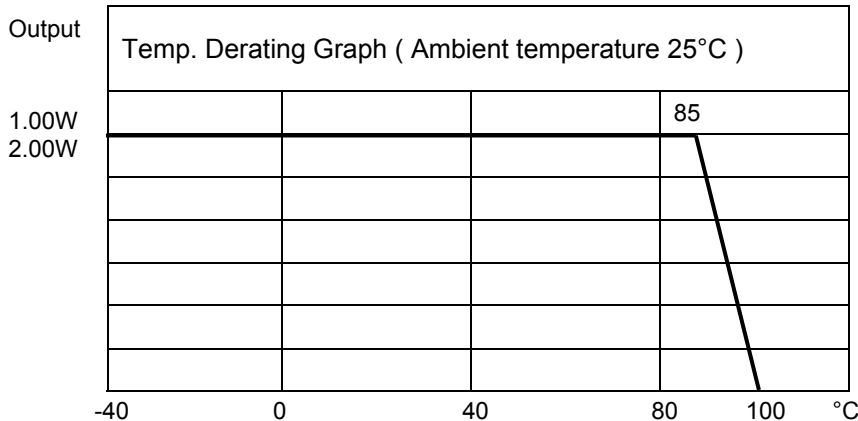


External Dimension & PCB Installation:



DIP 14 pin

Temperature Derating Graph and PIN Definition



Pin	Function		
14	+	Vin	Input +
1	-	Vin	Input -
2~6			
7			NC
8	0	0V	Common
9	+	Vout	Output +
10			NC
11	-	Vout	Output -
12,13			

* Note: the product design and specification are subject to change without notice.