



DIN RAIL FILTER

ZHN SERIES

All the patents are held accountable counterfeiting.

Features



- Improve efficiency with open and close cover
- Screw fixing type and din rail mounting type
- Cost-effective

DIMENSIONS:92(H)*41(D)*53(W)mm

WEIGHTS: 117g

General specifications

INPUT

Input range

250VAC

250VDC

Input frequency

50~60Hz

Max. leakage current

250VAC/60Hz 1.0mA

Detail specifications

| MODEL | Load (Rated Current) | Installation Type |
|-------------|----------------------|-------------------|
| 16-ZHN14-10 | 10A | Screw fixing |
| 16-ZHN14-20 | 20A | Screw fixing |
| 16-ZHN14-30 | 30A | Screw fixing |
| 16-ZHN15-10 | 10A | Din rail |
| 16-ZHN15-20 | 20A | Din rail |
| 16-ZHN15-30 | 30A | Din rail |

CE Standards

IEC 60939-2, IEC 60939-3

Safety Standards



UL

APPROVAL



CE

Marking

Environments

Operating Temperature

-40 ~ 100°C, Ambient

Operating Humidity

20 ~ 90% RH, No Condensing

Storage Temperature

-25 ~ 100°C, Ambient

Vibration

2G, 10~500Hz, 3 axes

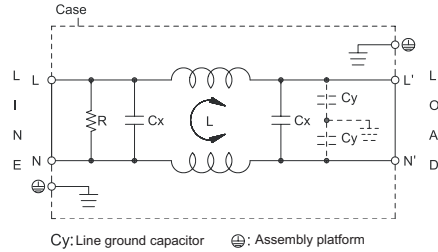
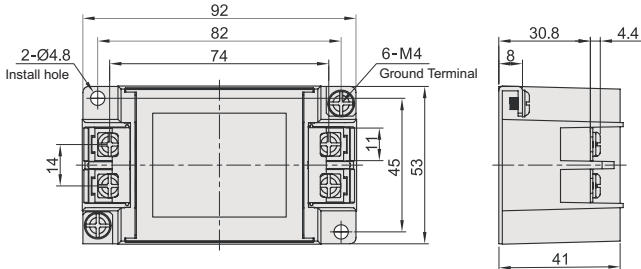


All the patents are held accountable counterfeiting.

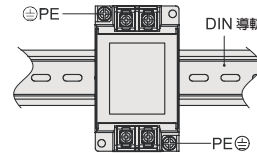
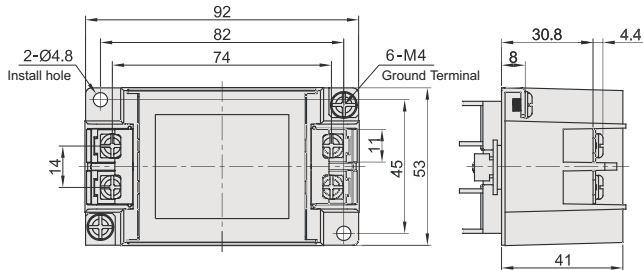
Mechanical details

Wiring diagram

ZHN14



ZHN15



- To install EMI filter on the din rail :
 When EMI filter is grounded through din rail, proper noise attenuation may not be achieved. Make sure to connect the protective earth (PE) of EMI filter to ground.

NOTE

1. Reign Power reserve the right to change specifications at any time without notice.